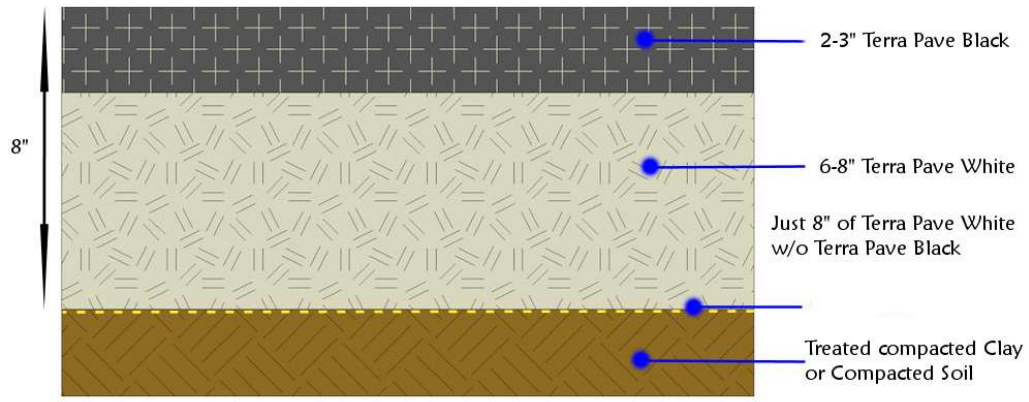


Comparison of Terra Pave Product spray on 8" of road aggregate vs. Asphalt & Concrete

8" TPWhite or 8" TPWhite/Black



>\$5.00 / sqft



- 2-inch layer of a 12.5 mm well-graded wearing surface
- 3-inch layer of a 12.5 mm well-graded asphalt binder layer with a finer aggregate blend
- 4-inch layer of a 25 mm well-graded intermediate asphalt layer
- 4-inch layer of a 25 mm well-graded intermediate asphalt layer
- 3-inch layer of a 25 mm well-graded asphalt base layer

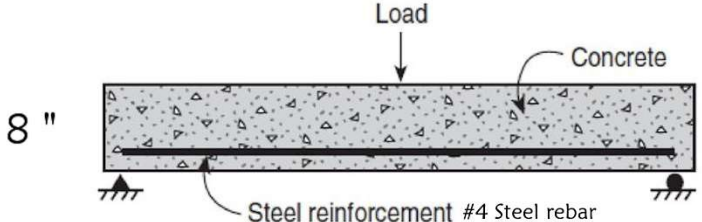
ASPHALT STRUCTURE

\$6.00 - \$8.00 / sqft

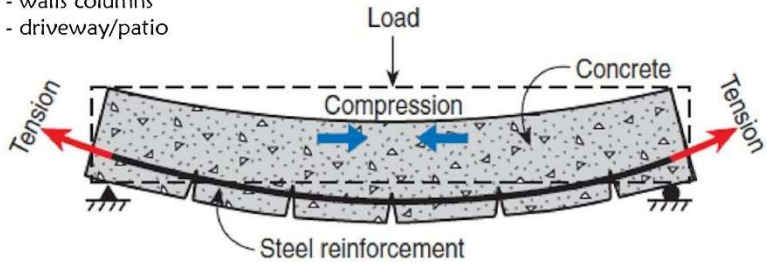


Different Asphalt Mixtures in the Pavement Structure

Why Use Reinforcement in Concrete?



- #5 rebar - footers and foundation
- #4 rebar - walls columns
- #3 rebar - driveway/patio



CONCRETE STRUCTURE

\$9.00 - \$15.00 / sqft

